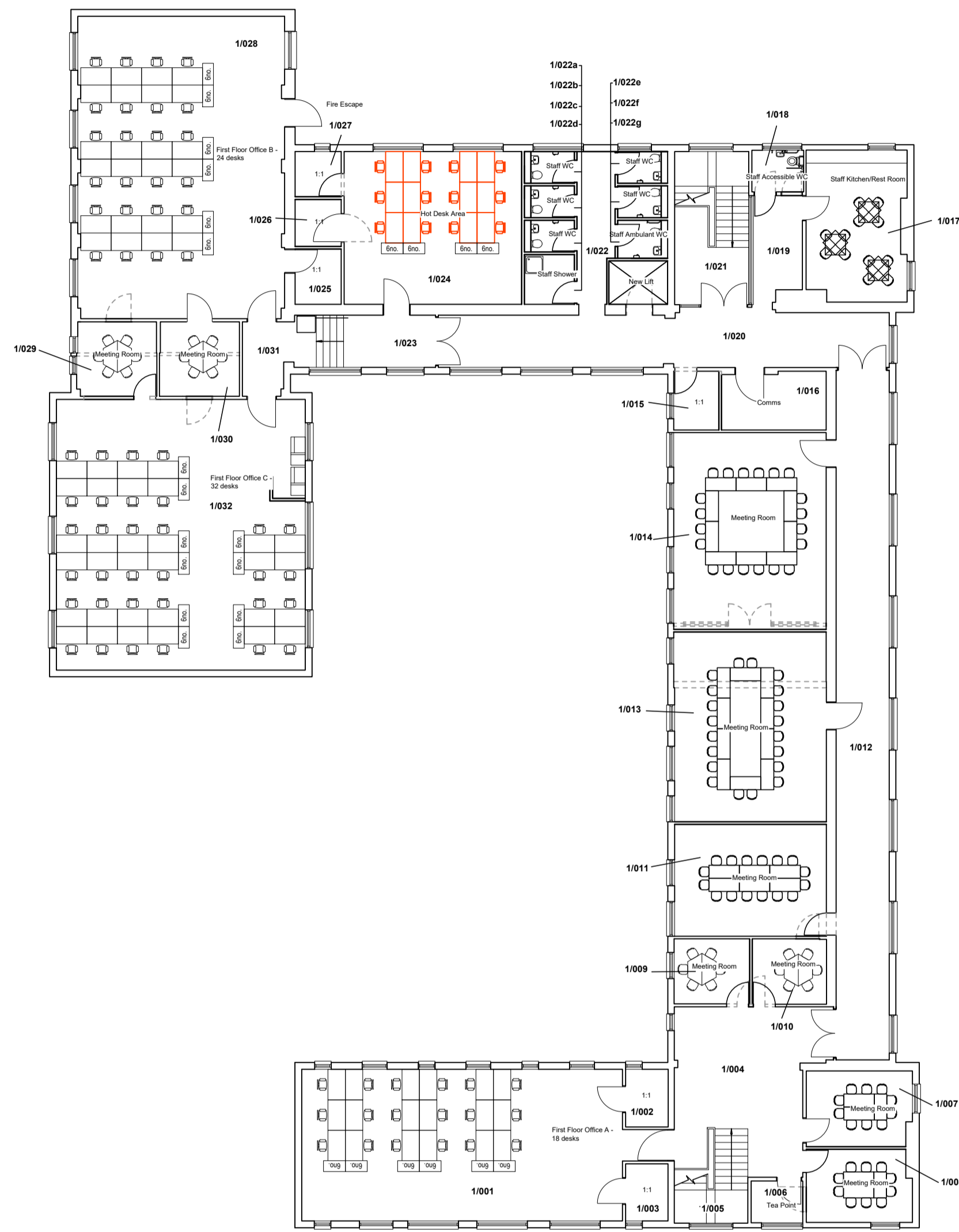


 Cleremont Unit

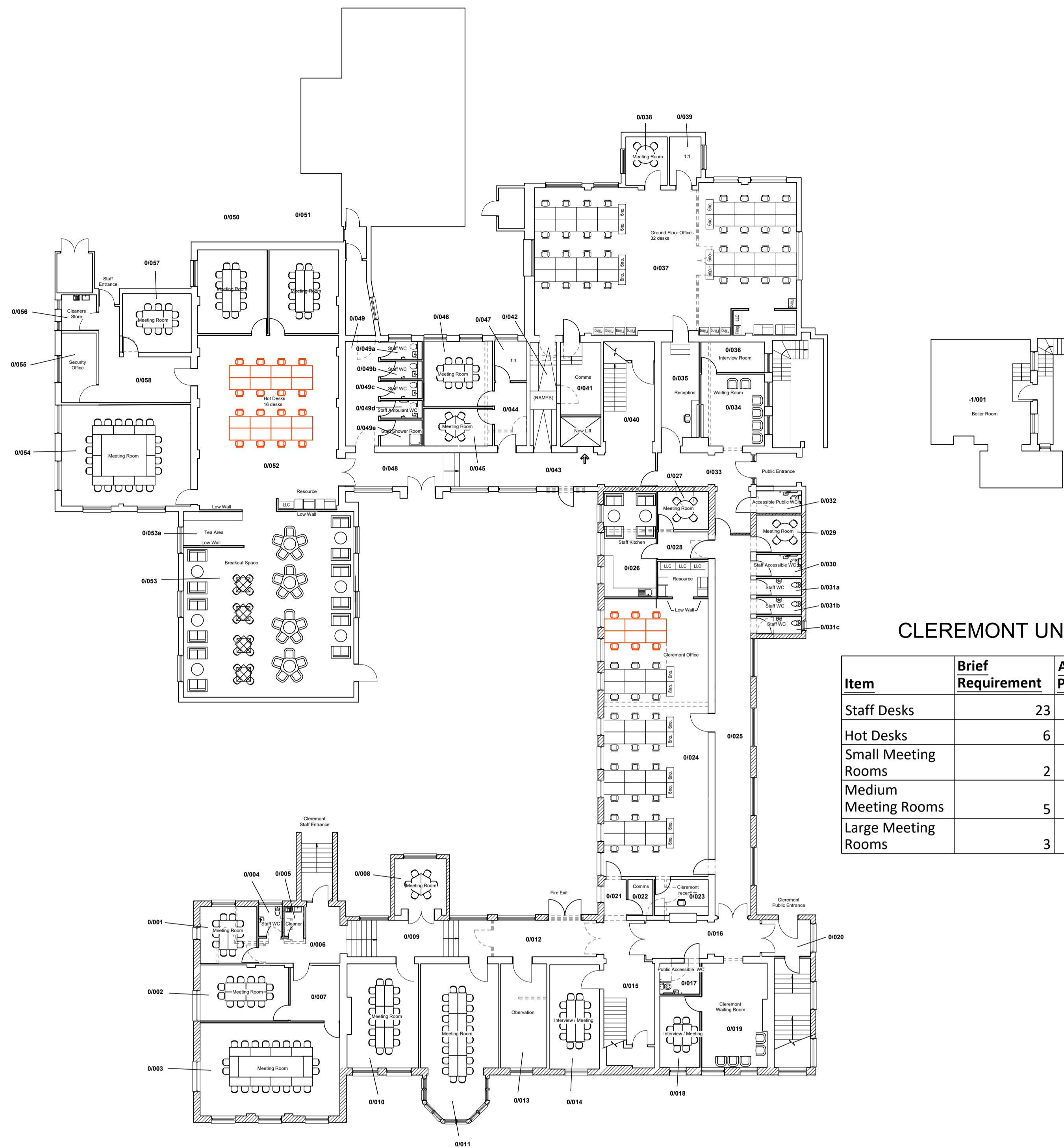
 Social Work South

 Denotes Hotdesks



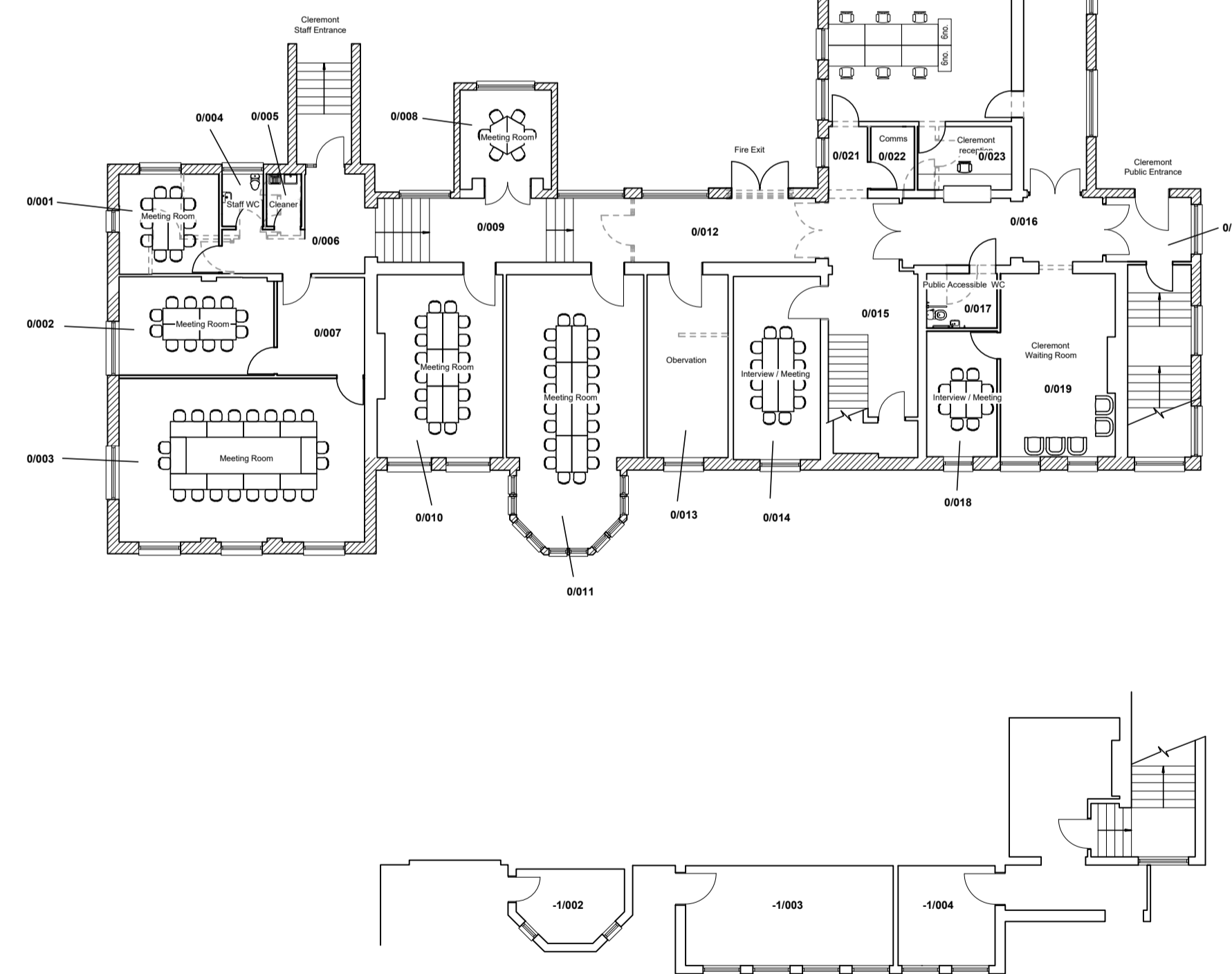
SOCIAL WORK SOUTH

Item	Brief Requirement	Allocated in Plan
Staff Desks	90	106
Hot Desks	26	28
Small Meeting Rooms	7	8
Medium Meeting Rooms	3	9
Large Meeting Rooms	6	6

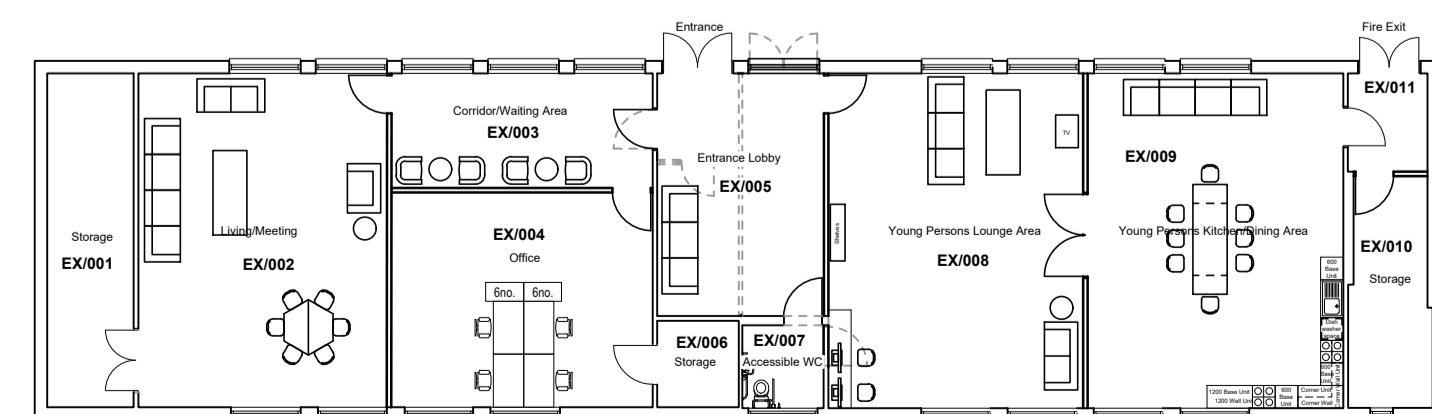


CLEREMONT UNIT

Item	Brief Requirement	Allocated in Plan
Staff Desks	23	24
Hot Desks	6	6
Small Meeting Rooms	2	2
Medium Meeting Rooms	5	5
Large Meeting Rooms	3	3



IFP FOSTERING



REV	DATE	DESCRIPTION

Drawing Status  
**FEASIBILITY**



Brighton & Hove City Council  
Property & Design  
Hove, East Sussex, BN3 3BQ  
Telephone: (01273) 290000

Project  
**Kings School**

Title  
**Proposed Office Plan for Cleremont Unit and Social Work South**

Drawn By: AR  
Check 1: NM  
Check 2: NM  
Date: Oct 2019

Project No.: **F1821**  
Scale: 1:200 @ A1

Drawing No.: **001**  
Revision:

